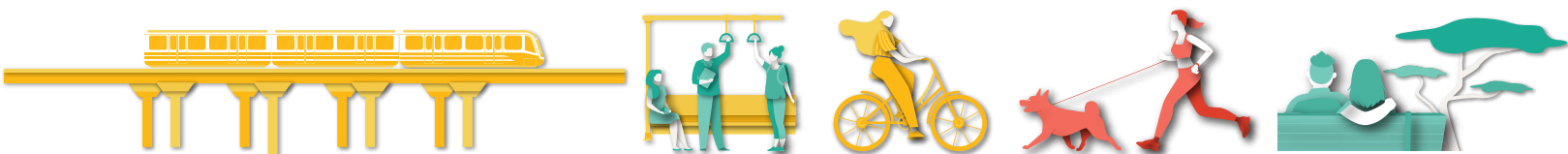


# LIVISTA

BANDAR SRI DAMANSARA

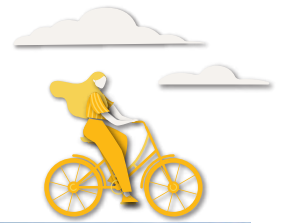
LIVE CONNECTED • LIVE GOOD • LIVE SERENE • LIVE VIBRANT





# LIVE BEAUTIFUL

A MODERN HUB OF ACTIVITY AND VARIETY



500meter To Sri Damansara West Station



Exciting F&B hotspot



Township for the Next Generation



Pedestrian & covered walkway to Sri Damansara West MRT Station

Artist's Impression



5.21 acres of lifestyle park

Artist's Impression





# LIVE GOOD

HOME TO ELEVATE YOUR LIFESTYLE FROM NATURE  
TO LEISURE

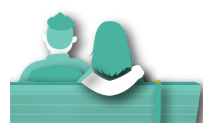


## RELAX

CAMPING BY THE SKY



GREETINGS FROM  
3 STOREY HEIGHTS WATER  
CASCADE, EVERYDAY



## SWEAT

SWIM LIKE A CHAMPION  
DIVE INTO 50METER LAP POOL



## PLAY

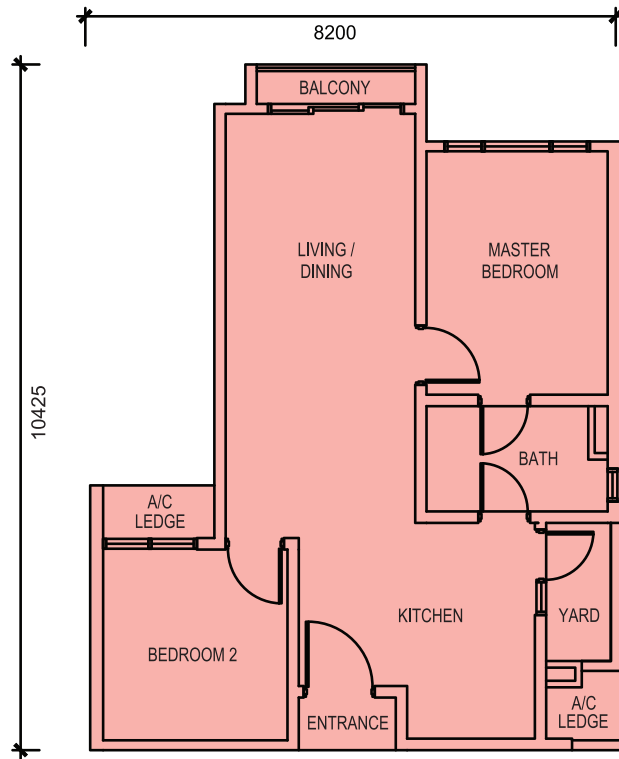
NEVER MISS YOUR  
PRECIOUS BONDING  
TIME TOGETHER



# ELEGANT COMFORT IN EVERY CORNER

## TYPE A

- | 690 sf
- | 2 Bedrooms
- | 1 Bath

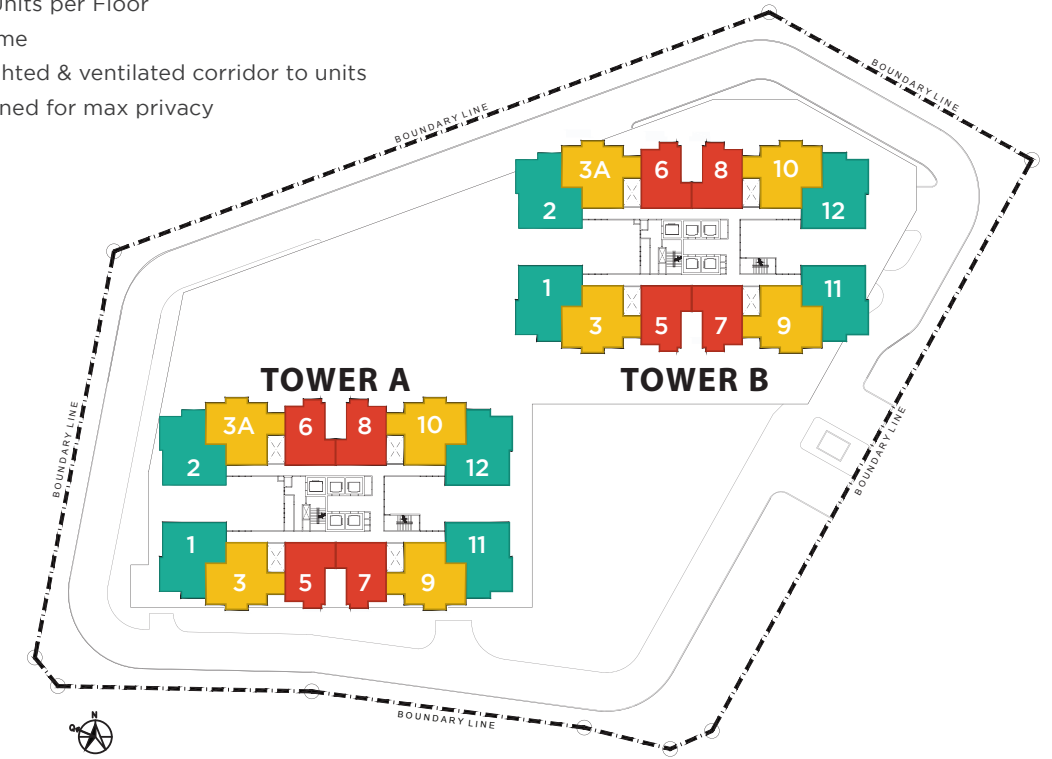


## WELL DESIGNED I - FIN ELEMENT

The floor layout are intentionally designed in " I " fin element to promote natural air cross ventilation, at the same time, it invites general amounts of natural light, subsequently helping minimize the usage of energy.

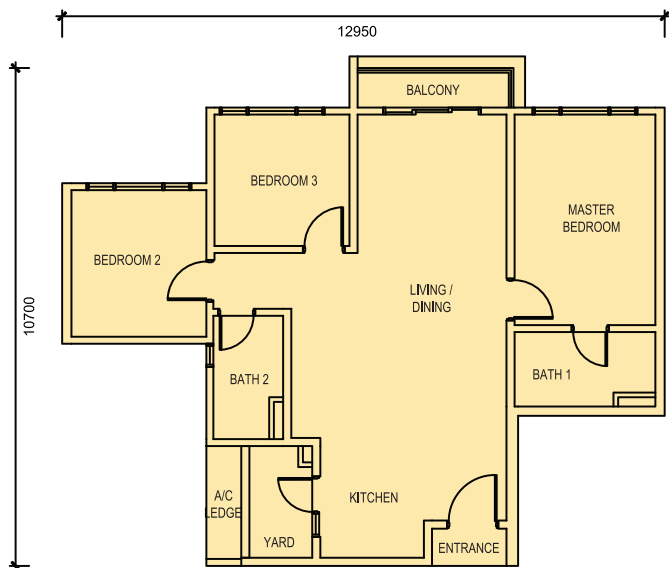
- Units designed for maximum natural lights & ventilation
- Low density at only 8 - 12 Units per Floor
- 4 + 1 lifts shorten waiting time
- Comfortable spaces well lighted & ventilated corridor to units
- Lift Lobby & Corridor designed for max privacy

- Type A : 690 Sq.ft
- Type B1 : 1012 Sq.ft
- Type B2 : 1035 Sq.ft



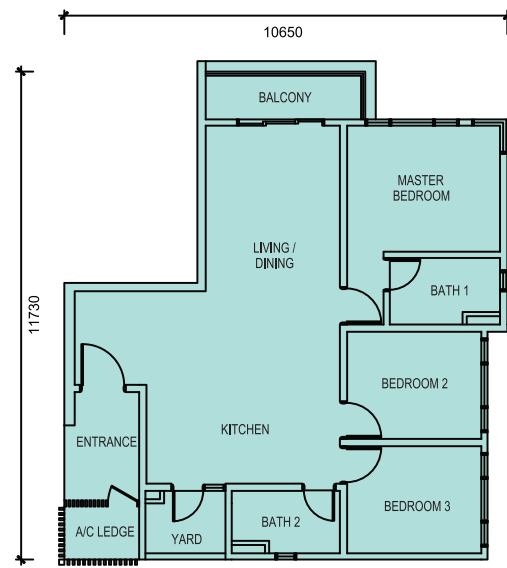
## TYPE B1

- | 1012 sf
- | 3 Bedrooms
- | 2 Baths



## TYPE B2

- | 1035 sf
- | 3 Bedrooms
- | 2 Baths



## SPECIFICATIONS

### STRUCTURE

Reinforced concrete

### WALL

Brick wall / Reinforced concrete

### ROOFING COVERING

Reinforced concrete

### CEILING

Skim coat and paint  
Plaster board and paint ( where applicable )

### WINDOW

Aluminium framed with glass

### DOOR

Fire door for main entrance  
Timber flush door for all bedrooms, all bathroom and yard  
Aluminium framed sliding glass door for balcony

### IRONMONGERIES

Quality locksets and handle

### WALL FINISHES

Tiles to kitchen & bathroom  
Paint to living, dining, all bedrooms, general

### FLOOR FINISHES

Laminated timber flooring to all bedrooms and living / dining (Type A)  
Tiles to all bathrooms  
Tiles to living / dining (Type B1 & B2), kitchen, foyer, balcony, yard and general

### SANITARY & PLUMBING FITTING

Type	A	B1	B2
Shower Point	1	2	2
Water Closet (WC)	1	2	2
Wash Basin & Tap	1	2	2
Kitchen Sink	1	1	1

### ELECTRICAL INSTALLATION

Type	A	B1	B2
Lighting Point	13	17	18
Ceiling Fan Point	4	5	5
13A Switch Socket Outlet	12	12	14
15A Switch Socket Outlet	1	1	1
Air Conditioning Point	3	4	4
Water Heater Point	1	2	2
SMTV / TV Point	1	1	1
Door Bell Point	1	1	1
Telephone Point	1	1	1
Electrical Distribution Box	1	1	1

# DISCOVER BANDAR SRI DAMANSARA



## SHOPPING MALLS

The FLO Alfresco Street	50 m
Star Grocer Supermarket	50 m
8trium	300 m
Decathlon / Courts Mammoth	300 m
Uniqlo Sri Damansara	1 km
Lotus Menjalara	5.2 km
Plaza Arkadia	5.6 km
Aeon Mall Metro Prima	6 km
The Curve Shopping Mall	7.1 km
IKEA	7.2 km
1 Utama Shopping Centre	8.4 km

## EDUCATION

Sri Bestari International School	600 m
Sri Bestari Private School	600 m
SK Bandar Sri Damansara 2	850 m
SK Bandar Sri Damansara 1	1 km
SMK Bandar Sri Damansara 2	1.2 km
SK Bandar Sri Damansara 3	1.8 km
SMK Bandar Sri Damansara 1	2 km
SJK (C) Desa Jaya 2	2 km
IGB International School	4.6 km
The International School @ Park City	5.4 km
ELC International School	5.6 km
First City University College	11.3 km

## HOSPITALS & MEDICAL CENTRES

Parkcity Medical Centre	5.9 km
Damansara Specialist Hospital 2	6 km
Damansara Damai Medical Centre	6 km
Sungai Buloh Hospital	7.2 km
Selayang Hospital	8.8 km
KPJ Damansara Specialist Hospital	10.1 km
Tropicana Medical Centre	13.1 km

## PUBLIC TRANSPORTATION

Sri Damansara West MRT Station	500 m
Sri Damansara Sentral MRT Station	3 km
Sri Damansara East MRT Station	4 km
Kepong Sentral KTM Commuter Station	4 km
Damansara Damai MRT Station	7 km



----- Cover walkway with connection of Pedestrian Link



Developed By:

**SRI DAMANSARA SDN BHD** (110516-H)  
A Subsidiary Of Land & General Berhad.  
8trium, Level 18, Menara 1, Jalan Cempaka Sd 12/5,  
Bandar Sri Damansara, 52200 Kuala Lumpur.  
**TEL:** +603-62798000 **FAX:** +603 6279 8022



Get in touch with us to get more information

**03-6419 9858**  
[www.livista.com.my](http://www.livista.com.my)



THE FLO, Jalan Persiaran Perdana,  
Bandar Sri Damansara, 52200  
Kuala Lumpur, Malaysia.

Nama Pemajuan Perumahan : Sri Damansara Sdn Bhd 8trium, Level 21 Menara 1, Jalan Cempaka SD 12/5, Bandar Sri Damansara, 52200, Kuala Lumpur. Tel: 603-6279 8000

No. Lesen Pemaju : 3981/06-2025/0665(A) - Tempoh Sahlaku : 15/06/2022 – 14/06/2025 - Nombor Permit Iklan & Jualan : 3981-40/08-2026/0941(N)-(S) - Tempoh Sahlaku : 22/08/2023 – 21/08/2026 - Berkuasa Yang Meluluskan Pelan Bangunan: Majlis Bandaraya Petaling Jaya - No. Pelan: MBPJ/120100/T/P10/63/2023 - Tarikh Jangka Siap Oktober 2027, - Jenis Pegangan Tanah : Hak Milik Kekal - Bebanan Tanah: MALAYAN BANK BHD - Jenis Rumah: Pangsapuri Perkhidmatan - Jumlah Unit: 700 units - i. Pangsapuri Servis 344 Unit : RM537,800.00 (Min) RM890,000.00 (Mak) ii. Pangsapuri Servis 356 Unit : RM578,000.00 (Min) RM895,700.00 (Mak)

IKLAN INI DILULUSKAN OLEH JABATAN PERUMAHAN NEGARA